



NATIONAL RURBAN MISSION

NRuM

STATE INSTITUTIONAL FRAMEWORKS

MINISTRY OF RURAL DEVELOPMENT

OVERALL INSTITUTIONAL FRAMEWORK



STATE LEVEL EMPOWERED COMMITTEE - CONCEPT

What is an SLEC? SLEC headed by the Chief Secretary, of each State will review and approve the ICAPs and DPRs submitted by the State Nodal Agency for further submission to the Ministry.

SLEC Chaired By	Chief Secretary
SLEC Member Convener	Principal Secretary/ Secretary Rural Development Department
Members	10-20
Meeting Mandate	Quarterly

Chief Secretary	Chair-Person
Development Commissioner	Vice-Chairperson
Principal Secretary / Secretary Rural Development Department	Member Convener
Principal Secretary / Secretary Panchayati Raj	Member
Principal Secretary / Secretary Finance	Member
Principal Secretary / Secretary Planning and Development Division	Member
Principal Secretary / Secretary Urban, Revenue and Land Development Department	Member

SPMU- Scope of Work

Overall Mandate of SPMU: To provide technical and operational support to State Nodal Agency for the successful implementation of the mission.

Specific Tasks :

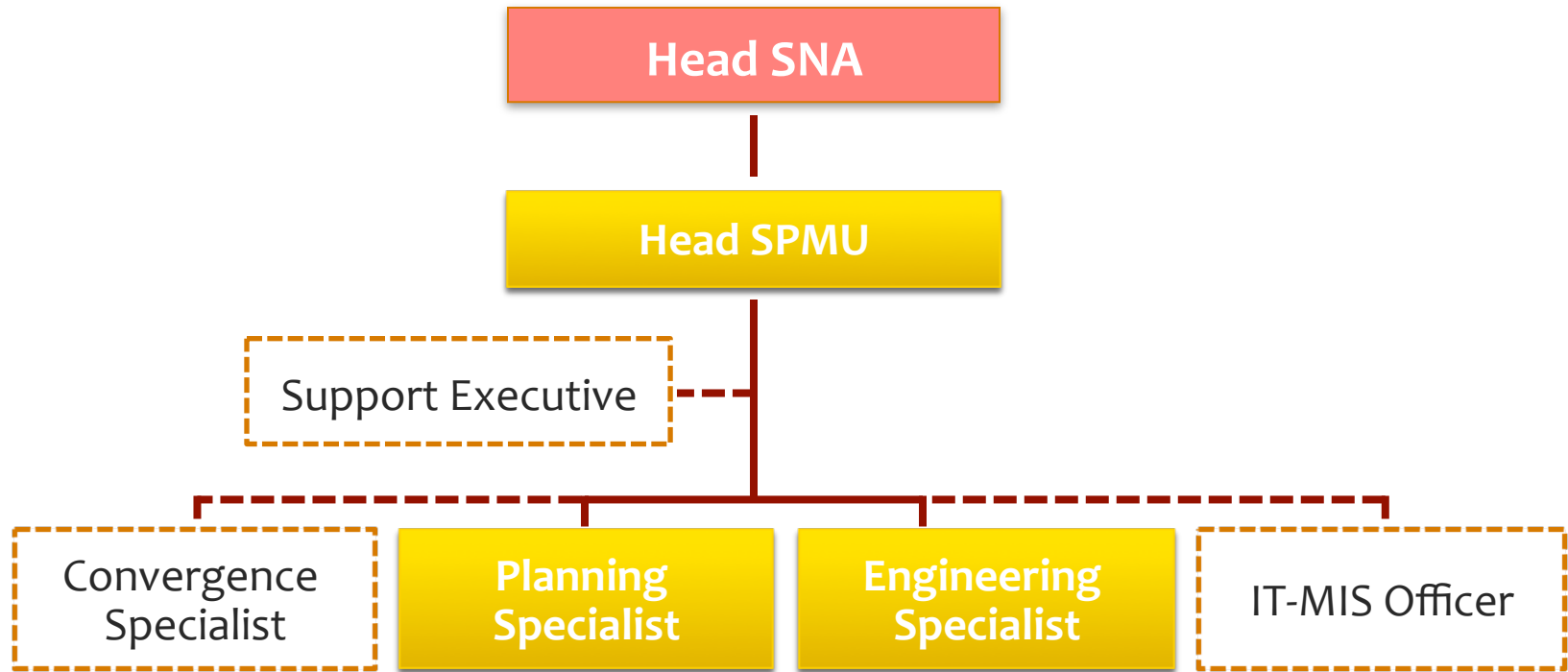
■ Technical

- Cluster Selection process.
- ICAP/DPR preparation and finalization.
- Training and Capacity Building – in close co-ordination with STSA.
- Monitoring implementation of mission components.

■ Operational

- Support to SNA for all mission related day-to-day functions.
- Facilitating approvals for Cluster Selection/ICAP/DPR from SNA& SLEC.
- Support DC in setting up DPMU for every cluster.
- Liaising closely with District Collector, Planning Committee and DPMU.

SPMU – Structure & Team Composition



The SPMU would need to be set up as soon as the Mission is launched. The unit will be located within the SNA premises and the tenure would be 3 years coinciding with the Mission period.

SPMU: Desirable expertise

Team Member	Qualification and Experience
Head SPMU	Professional degree in Rural Management/ Planning/Engineering/ Development Management with 15 to 20 years of experience in managing similar large scale Gov/State programs at National/State level.
Urban Planning Specialist	Professional degree in urban planning with 10 to 15 years of experience in spatial planning/preparation of Master Plans, and development plans.
Engineering Specialist	Civil Engineer with 10 to 15 years of experience in working with similar State/ Central programs at the State/National level in preparation and evaluation of DPRs.
Convergence Specialist	Master degree in Rural development/ Agriculture/Social sciences with 10 to 15 years of experience of working with large scale schemes in Govt., NGOs or International orgs.
IT/MIS Officer	Degree in management/IT with 5 to 10 years of experience of documentation, report writing, monitoring and evaluation of similar programs.
Support Executive	Professional degree in Management/ Development with 1 to 3 years of experience.

DISTRICT LEVEL COMMITTEE

What is an DLC? A District Level Committee would be constituted with the officers of the concerned line Departments and Sarpanchs of the concerned Gram Panchayats.

Deputy Commissioner/ District Collector/ District Magistrate	Chair-Person
Deputy Development Commissioner / CEO Zilla Parishad/Chief Development Officer	Vice-Chairperson
District Planning Officer	Member
District Welfare Officer	Member
District Social Welfare Officer	Member
District Education Officer	Member
District Agriculture Officer & Allied Sectors	Member
District Transport Officer	Member
Civil Surgeon cum Chief Medical Officer	Member
District Informatics Officer	Member
District Panchayati Raj Officer	Member
Charge Officers of each cluster	Member
Sarpanch/ Gram Pradhan of concerned Cluster Villages	Member
Reputed NGOs working in area	Member

DPMU - Scope of Work

Overall Mandate of DPMU: To monitor all NRuM related activities in the district and provide technical and operational support to District Collector on all mission related activities for all the clusters.

Specific Tasks :

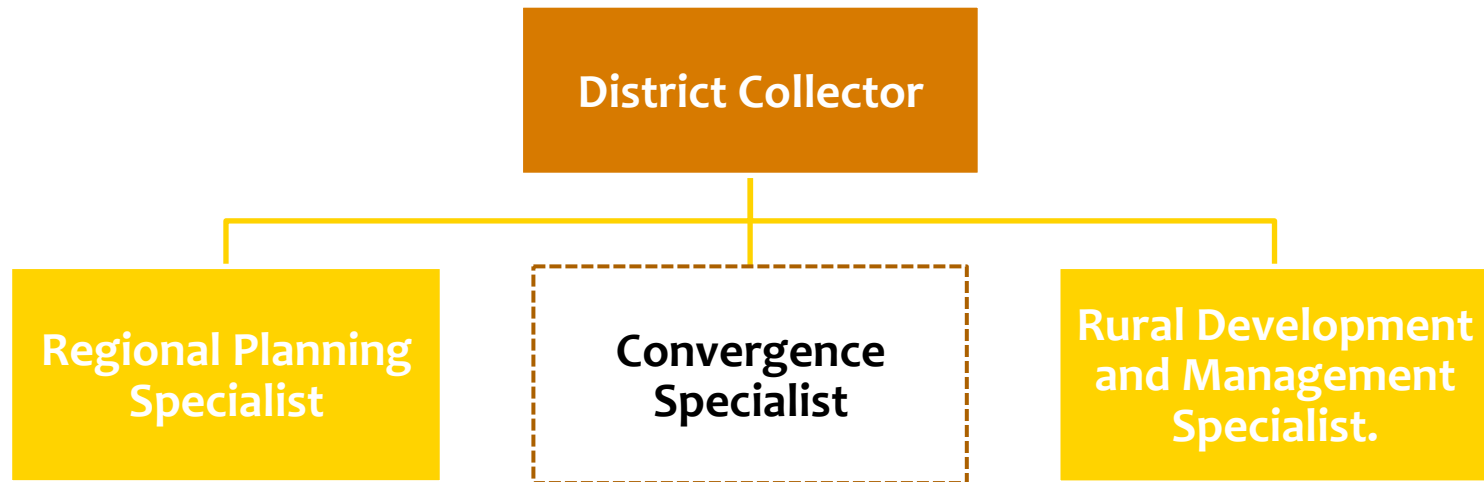
■ *Technical*

- Oversee all spatial planning activities-viz. delineation of planning area, formation of district committee, preparation of Master plan for all the clusters in the district
- Support to STSA and SPMU in ICAP/DPR preparation and finalization.
- Support to Training and Capacity Building – in close co-ordination with STSA and SPMU
- Monitoring implementation of mission components for all the clusters in the district.

■ *Operational*

- Support to DC for all mission related day-to-day functions.
- Stakeholder consultations
- Facilitating Gram Sabha resolutions for undertaking of Rurban Mission
- Liaising closely with District Collector, District Committee and SPMU.

DPMU – Structure & Team Composition



- The existing pool of Prime Minister Rural Development Fellows (PMRDFs) of the State wherever present may also be engaged.
- DPMU team may be appointed through open recruitment process by the SNA on contractual basis for a period of 3 years.
- DPMU will be setup immediately after identification and approval of clusters and would be housed at the DC office. The tenure of DPMU team members shall be for a period of 3 years coinciding with the Mission period.

DPMU: Desirable expertise

Team Member	Qualification and Experience
Regional Planning Specialist	Post Graduate degree in Rural Management/Regional Planning/Spatial Planning with 3-5 years of experience in preparation of Master Plans/District Development Plans/Land Use Plans.
Rural Development & Management Specialist	Master degree in rural development/rural management, agriculture or social sciences with 3 to 5 years of experience preferably in the rural sector within the State.
Convergence Specialist	Master degree in Rural development/Agriculture/Social sciences/ infrastructure planning with 3 to 5 years of experience of working with large scale schemes either with the State Government or with the National Government.

CDMU- Concept and Rationale

What is a CDMU?

At the Cluster level, a Cluster Development and Management Unit (CDMU) will be set up for each Rurban cluster comprising at least two professionals, i. Spatial planning professional ii. Rural Development and Management professional. This unit will closely monitor the spatial planning aspects and the ICAP preparation for the cluster and will also closely monitor the progress of the activities in the cluster and provide regular updates to the DPMU/SPMU.

Why is a CDMU needed?

The CDMU is required to provide cluster focused support to ensure smooth implementation of all cluster related activities.

How will the CDMU be set up?

CDMU team may be appointed through open recruitment process by the SNA on contractual basis for a period of 3 years.

When and Where will the CDMU be set up?

CDMU will be setup immediately after identification and approval of clusters and would be housed at the cluster level. The tenure of CDMU team members shall be for a period of 3 years coinciding with the Mission period.

CDMU - Scope of Work

Overall Mandate of CDMU: To monitor all cluster related activities and provide technical and operational support to District Collector/DPMU/BDO on all mission related activities for each cluster.

Specific Tasks :

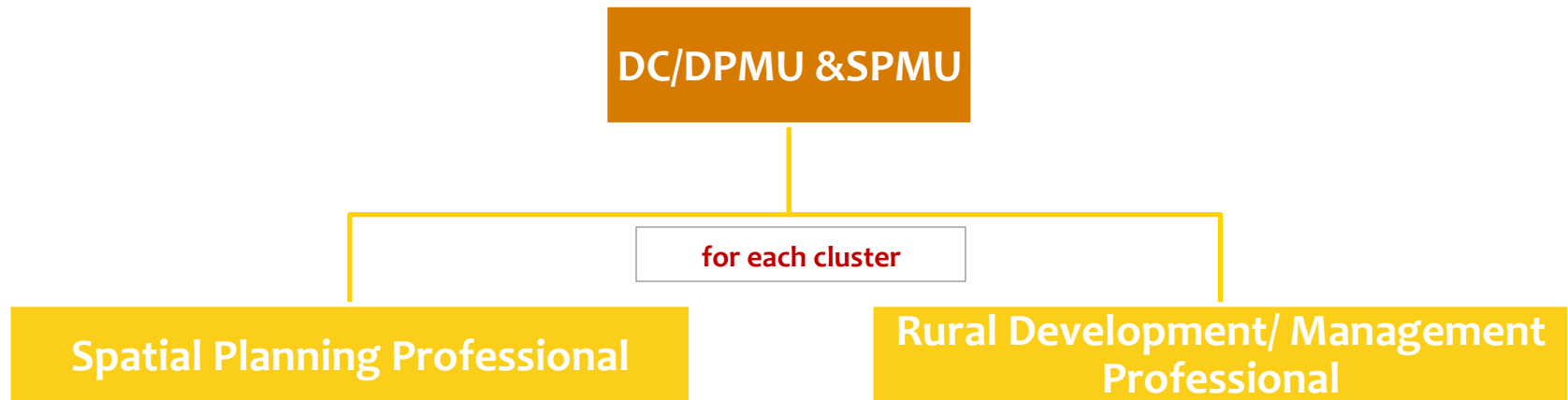
■ **Technical**

- Oversee all spatial planning activities-viz. delineation of planning area, preparation of Master plan for the cluster
- Support to STSA, SPMU and DPMU in ICAP/DPR preparation and finalization.
- Support to Training and Capacity Building – in close co-ordination with STSA, SPMU and DPMU
- Monitoring implementation of mission components for each cluster.

■ **Operational**

- Support to DPMU/DC for all mission related day-to-day functions at the cluster level.
- Stakeholder consultations with PRIs
- Facilitating Gram Sabha resolutions for undertaking of Rurban Mission
- Liaising closely with District Collector, District Committee, Planning Committee Block HQ, DPMU and SPMU.

CDMU: Structure and Team Composition



The CDMU Team comprising of ***one Spatial Planning Professional and one Rural Development/Management Professional for each cluster*** will be set-up for each cluster at the cluster level and will reporting to the DC/DPMU and SPMU

DPMU: Desirable expertise

Team Member	Qualification and Experience
Spatial Planning Professional	Post Graduate degree in Urban Planning with 3-5 years of experience in preparation of Master Plans/District Development Plans/Spatial Plans.
Rural Management Professional	Master degree in rural development/rural management, agriculture or social sciences with 3 to 5 years of experience preferably in the rural sector within the State.

THANK YOU