



Ministry of Rural Development
Government of India

SHYAMA PRASAD MUKHERJI RURBAN MISSION

National Rurban Mission (NRuM)

State Institutional Frameworks

Contents

1.0	Setting the context	3
2.0	Institutional frameworks under the National Rurban Mission (NRuM)	3
3.0	State-Institutional framework under National Rurban Mission (NRuM)	4
4.0	State Level Empowered Committee	5
5.0	State Nodal Agency	6
6.0	State Technical Support Agency	7
7.0	State Project Management Unit	7
8.0	District Level Institutional Frameworks	9
9.0	Cluster Level Institutional Frameworks	11
	Annexure 1: Suggested Constitution of State, District and Cluster Level Committees	12
	Annexure 2: Desirable expertise and team composition of SPMU	14
	Annexure 3: Desirable expertise and team composition of STSA	14
	Annexure 4: Desirable expertise and team composition of DPMU and CDMU	15

List of Tables

Table 1:	Constitution of a SLEC	5
Table 2:	Proposed Composition of District Level Committee	10

List of Figures

Figure 1:	Institutional Structure at the National Level	4
Figure 2:	Institutional Structure in the States	4

Shyama Prasad Mukherji Rurban Mission (SPMRM)

National Rurban Mission (NRuM)

State Institutional Frameworks

1.0 **Setting the context**

The National Rurban Mission (NRuM) aims at development of a cluster of villages that preserve and nurture the essence of the rural community life with focus on equity and inclusiveness without compromising with the facilities perceived essentially urban in nature, thus creating a cluster of 'Rurban villages'.

The Mission intends to simulate local economic development, enhance basic services and create well planned Rurban clusters. About 300 Rurban clusters will be developed over the next five years, which have latent potential for growth, in all States and UTs, which would trigger overall development in the region.

Under this Mission, every Rurban cluster will be developed as a project comprising components covering training linked to economic activities, developing skills and local entrepreneurship and will provide necessary infrastructure amenities. These projects will be implemented over a fixed timeframe of three years by integrating and converging the implementation of project components. This will be followed by an operations and maintenance period of ten years.

The Mission will be implemented keeping the States as anchors and key implementers. The institutional framework under the Mission envisages the engagement of key stakeholders at the National, State, District and Gram

Panchayat level for implementing the Mission. The Institutional arrangement will implement the Mission in accordance with various Mission guidelines and frameworks.

The following sections present the Framework of Implementation for setting up State Institutional Arrangements for identification, development, implementation and operation and maintenance of Rurban Clusters in a state.

2.0 **Institutional frameworks under the National Rurban Mission (NRuM)**

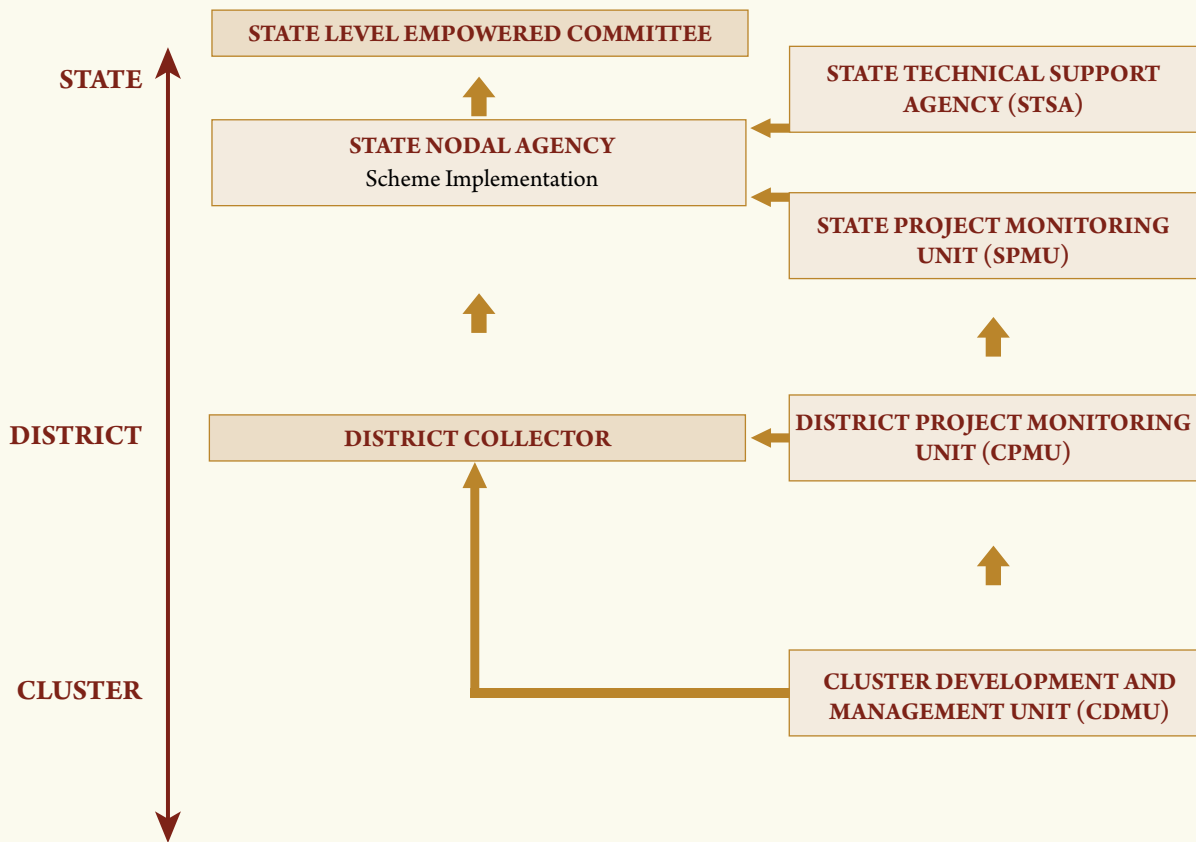
The National Rurban Mission (NRuM) has proposed institutional frameworks vide section 8.0 of the Framework of Implementation – Part 1. While, Institutional frameworks have been set up at the National level for formulation and facilitating the implementation of the Mission by the Ministry, The State Institutional Frameworks will play a key role in implementing the Mission. The State Institutional arrangements will be expected to identify Rurban clusters, plan its development through preparation of Integrated Cluster Action Plans (ICAPs) and thereafter implement and support in the operations and maintenance of the Rurban cluster.

The following institutional arrangements have been proposed vide section 8.0 of the Framework of Implementation – Part 1.

FIGURE 1: INSTITUTIONAL STRUCTURE AT THE NATIONAL LEVEL



FIGURE 2: INSTITUTIONAL STRUCTURE IN THE STATES



3.0 State-Institutional framework under National Rurban Mission (NRuM)

The state institutional framework is expected to be set up at three levels viz. the state government level, district level and at the cluster. The following are the key institutions at the state.

3.1 State Level Empowered Committed (SLEC): at the State level will be headed by the Chief Secretary and will recommend the ICAPs and approve the DPRs and CGF applications before submission to the Ministry. The SLEC will also be responsible for key decisions at State level for effective coordination and implementation of the scheme.

TABLE 1: CONSTITUTION OF A SLEC

Chief Secretary	Chair-Person
Development Commissioner	Vice-Chairperson
Principal Secretary / Secretary Rural Development Department	Member Convener
Principal Secretary / Secretary Panchayati Raj	Member
Principal Secretary / Secretary Finance	Member
Principal Secretary / Secretary Planning and Development Division	Member
Principal Secretary / Secretary Revenue and Land Development Department	Member
Other members will be invited based on component chosen as per list suggested in Annexure-I	

3.2 **State Nodal Agency (SNA):** At the State level, Department of Rural Development or an Agency or any Department nominated by the State Government will be designated as the State Nodal Agency (SNA) for purposes of the Rurban Mission. The Department/SNA will be supported by a State Project Management Unit (SPMU) to be set up in the Department/SNA. Preferably, the selected agency should be under the administrative domain of the State Government's Rural Development and/or Panchayati Raj Department, as the case may be.

3.3 **State Project Management Unit (SPMU):** This will be a technical and operational unit attached to the Department/SNA, mandated to provide overall support to the SNA to successfully run the mission. The SPMU would be headed by a senior rural development expert and would comprise specialists in Convergence, Planning, Engineering, IT& MIS.

3.4 **State Technical Support Agencies:** State Technical Support Agencies (STSAs) would be Institutions of repute, empanelled by the Ministry and engaged by the States, to support in selection of clusters, preparation of ICAPs and to hand hold the States in these processes.

4.0 State Level Empowered Committee

4.1 **What is an SLEC?** SLEC headed by the Chief Secretary, of each State will review and approve

the ICAPs and DPRs submitted by the State Nodal Agency for further submission to the Ministry.

4.2 **Why is SLEC needed?** SLEC will recommend the ICAPs and approve the DPRs prepared before submission to the Ministry and will also be responsible for other key decisions for effective coordination and implementation of the scheme.

4.3 **Constitution of SLEC:** The SLEC headed by the Chief Secretary, would comprise Principal Secretary/Secretary Rural Development Department as the Member convener and other members from the State Government would be invited to be part of SLEC. This committee will meet at least once in three months for key decision making related to the Mission.

4.4 **Roles & Responsibilities of the SLEC:**

- i. To approve the Rurban clusters.
- ii. To take all decisions concerning acceptance of ICAP and DPRs, forwarding the same to the Ministry for approval.
- iii. Identify bottlenecks and the technical and administrative support required and issue necessary instructions/Government orders from time to time.
- iv. Coordinate with the committees at the national level as required.

- 5.1 **What is a SNA?** The State Level Nodal Agency would be either the Department of Rural Development or an Agency or any Department nominated by the State Government for the purposes of the Rurban Mission. Preferably, the selected agency should be under the administrative domain of the State Government's Rural Development and/or Panchayati Raj Department, as the case may be.
- 5.2 **Why is a SNA needed?** The National Rurban Mission (NRuM) is proposed to be implemented in a Mission mode, keeping the States as anchors and key implementers. The framework envisages the engagement of several stakeholders at the National, State, District and Gram Panchayat level. Hence, there is a need for a nodal agency to act as an umbrella and single point co-ordination for all the activities of National Rurban Mission (NRuM) in the State.
- 5.3 **How will it be set up?** The SNA will be designated by the State Governments by the Chief Secretary or Secretary RD.
- 5.4 **When and where will it be set up?** The very first step to be taken up by the State Government to kick start the mission would be to designate the SNA. The SNA would be set up in the Department of Rural Development or Panchayati Raj as the case may be.
- 5.5 **Constitution of SNA:** The SNA will be headed by an officer not below the rank of Secretary to the State Government. The Department identified as the SNA would create a cell for National Rurban Mission (NRuM) and would be supported by the SPMU which would provide the key technical expertise to the SNA for implementing the mission.
- 5.6 **Scope of Work of SNA:**
- i. **Cluster Identification/ICAPs and DPRs:**
 - a) SNA will identify Rurban clusters following a duly approved methodology
 - in consultation with the District Collector/CEO-Zila-Parishad/DDO/closely involving the Gram Panchayats.
 - b) SNA will prepare ICAPs and DPRs, with support from the STSAs/SPMU for the selected clusters in consultation with the District Collector/CEO-ZilaParishad/DDO/closely involving the Gram Panchayats.
 - c) SNA will obtain approvals from SLEC for the Rurban clusters, DPRs and from the EC at MoRD for the ICAPs and the CGF application.
 - ii. **Mission Monitoring:**
 - a) SNA in close co-ordination with the District Collector/District Magistrate and SLEC will ensure convergence of funds and resources and bring about inter-departmental coordination for this purpose as and when required.
 - b) SNA will review the progress of all activities related to the National Rurban Mission (NRuM) for all the clusters identified within the State.
 - c) SNA will take up any other matter relevant for the efficient implementation of the mission, or matters referred to it by National Rurban Mission (NRuM) Mission Directorate, Ministry of Rural Development.
 - iii. **Fund Management, Monitoring and Evaluation:**
 - a) The SNA will be responsible for managing the funds allocated to the State under this Scheme along with monitoring and evaluation of actual activities at the cluster level. Some of the specific functions to be performed in this regard are as follows:
 - ▶ Management of funds received under National Rurban Mission (NRuM) and timely disbursement to clusters for

completing the construction activities in National Rurban Mission (NRuM) Clusters.

- ▶ Submission of demand for annual fund requirements to Ministry of Rural Development based on the cluster allocation.
- ▶ Monitoring and Evaluation of construction activities at cluster level as per the outcome indicated in ICAP and ensuring timely completion.
- ▶ Submission of quarterly report and management of National Rurban Mission (NRuM) MIS for all clusters at State level.
- ▶ Maintenance of audited accounts of funds released to various clusters and furnishing of utilization certificate periodically after release of funds.

6.0 **State Technical Support Agency**

- 6.1 **What is an STSA?** STSAs are Institutions of repute empanelled by the Ministry to support State Governments with specific mandates to support the SNA to select the clusters, prepare ICAPs and DPRs as well as train and hand hold the States in ICAP and DPR preparation.
- 6.2 **Why is STSA needed?** This support is being rendered to the State Governments due to the focused and specialized technical support required in selection of clusters and preparation of ICAPs and DPRs.
- 6.3 **How will it be set up?** MoRD will nominate a list of institutions in the State and the States would choose the desired institute from this list as the preferred STSA.
- 6.4 **When and where will it be set up?** STSA would be nominated by the Ministry and the State Governments will engage the STSAs as an

immediate activity along with setting up of the SLEC and identification of SNA.

- 6.5 **Constitution of STSA :** The STSA selected under National Rurban Mission (NRuM) would have experts in urban and rural planning, civil engineering, economics, rural infrastructure planning, agriculture and allied sector expertise, community and social development. The STSAs would be engaged by the States on professional terms with clearly defined Terms of Reference (TOR).

The list of proposed institutions is annexed.

6.6 **Scope of Work of STSA:**

- 6.6.1 Support State Nodal Agency (SNA) to select clusters as per methodology proposed by Ministry of Rural Development (MoRD).
- 6.6.2 Support SNA and District Planning Committees in delineation of planning area and preparation of Master Planner/ Spatial for cluster area.
- 6.6.3 Preparation of Integrated Cluster Action Plan (ICAP) as per Framework of Implementation published by Ministry of Rural Development.
- 6.6.4 Handhold and train members of various State institutions constituted under the National Rurban Mission (NRuM) such as State Nodal Agency (SNA), State Project Monitoring Unit (SPMU) and District Project Monitoring Unit (DPMU) in cluster selection, ICAP.

7.0 **State Project Management Unit**

- 7.1 **What is a SPMU?** The State Project Management Unit would be a technical and operational unit attached to the SNA, mandated to provide overall support to the SNA to successfully run the mission. The SPMU would be headed by a senior rural development expert and

would comprise professionals in the field of engineering, planning and IT & MIS.

7.2 **Why is a SPMU needed?** The Mission envisages development of Rurban clusters as planned notified areas and by provisioning of economic and infrastructure amenities. The mission is proposed to be driven by the SNAs and requires efficient coordination amongst the institutions proposed at the State District and Cluster level. The SNA would thus need adequate expertise and support for day to day running of the Mission, which is envisaged to be provided by the SPMU.

7.3 **How will it be set up?** The SPMU could be a section or a cell within the SNA or could be set up by the SNA through various modes of engagement.

7.4 **When and where will it be set up?** The SPMU would need to be set up as soon as the Mission is launched. The unit will be located within the SNA premises and the tenure would be five years coinciding with the Mission period.

7.5 **Scope of work:** SPMU is designed to provide the requisite technical and executive support to SLNA to ensure effective implementation of the program at State level. The SPMU would operate as a unit under the overall supervision and guidance of SNA, possibly housed within the SNA and would focus mainly on programme implementation, monitoring and evaluation.

The role of SPMU would encompass the following, but would not be limited to:

7.6 **Overall Strategic Support:**

- i. Facilitate SNA in Cluster Selection process.
- ii. ICAP/DPR appraisal and finalization in consultation with STSA and various stakeholders like District and Block Administration and the Panchayati Raj Institutions at cluster level.

iii. Support to SNA to obtain DPR approvals and recommendation of ICAPs from SLEC.

iv. Facilitate adequate and timely release of funds to projects.

v. Liaison with State and Central Government.

vi. The performance of SPMUs will be evaluated by the performance of the Mission in the State.

7.7 **Operational Support:**

i. Support to SNA for all mission related day-to-day functions.

ii. Coordination with all stakeholders to facilitate smooth implementation of the Mission. This will involve support to SNA to closely liaison with Blocks, District Project Management Unit, District collector, District Planning Committees, SLEC and the Ministry of Rural Development.

iii. Support the district administration in setting up the District Project Management Unit and the Cluster Development and Management Unit for every cluster.

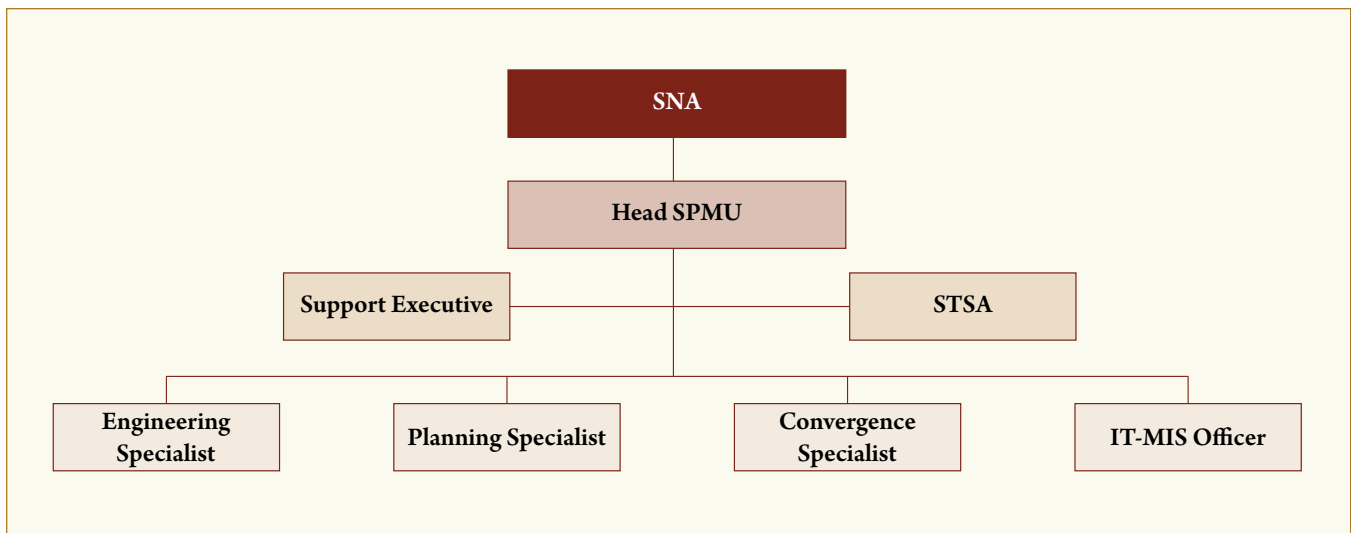
iv. Facilitate adequate and timely release of funds which would involve timely preparation and submission of Utilization Certificates for submission to the Ministry.

7.8 **Monitoring & Reporting Support:**

i. Monitoring implementation of mission components, regular reporting to SNA, NMMU and Ministry of Rural Development, Government of India.

ii. Establishing of Monitoring and Evaluation framework at the State level and ensuring regular on-line reporting and efficient utilization of funds disbursed.

iii. Report on progress of National Rurban Mission (NRuM) in the State, covering status of Integrated Cluster Action Plans, Master



Planning Process, Detailed Project Reports, Utilization Certificates, quarterly Progress Reports etc.

- iv. Ensure effective and timely reporting of progress of implementation and projects to Ministry, including web based Monitoring and Evaluation System.

7.9 Capacity Building support:

- i. Providing Capacity building and hand holding through training and capacity building of stakeholders specifically amongst the implementing agencies; DMPU, line departments and all other stakeholders including private sector and civil society organizations.
- ii. Support initiatives for capacity building as necessary.

7.10 Proposed team composition

The SPMU would be headed by a senior rural development expert and would comprise professionals in the field of engineering, planning and IT & MIS to ensure effective implementation of the project in a time bound manner.

The desirable team composition, expected qualification and experience and expertise of SPMU Team is available in Annexure – 2.

8.0 District Level Institutional Frameworks

At the District Level it is proposed to have a District level Committee for all approvals and facilitations and a District Project Management Unit to support the DC in co-ordination of this Mission. The details of these are as given below:

8.1 District Level Committee

What is a District Level Committee? A District Level Committee would be constituted with the officers of the concerned line Departments and Sarpanchs of the concerned Gram Panchayats.

Why is a District Level Committee needed? District Level Committees are required for empowering decisions at the District level especially on matters concerning convergence and district level coordination.

How will it be set up? The members of the committee can be decided by the Deputy Commissioner/District Collector/District Magistrate.

8.2 Scope of Work:

- i. The committee will monitor periodically, the progress of the implementation, release of funds, usage of funds, field visits, sectoral

convergence, corrective measures for achieving the programme objectives and any other issues as desirable by the Chairman of the Committee.

- ii. Planning, supervision, direction, coordination, monitoring and evaluation of implementation shall be done by the committee according to the directives of the State Level Empowered Committee and SNA.
- iii. The strategies, targets and goals for each cluster have to be formulated and monitored under the supervision and direction of the committee with support from the DPMU.
- iv. Integrated Cluster Action Plan (ICAP) shall be verified and reviewed by the committee before it is sent to the SNA.
- v. Committee shall supervise the training programme and assess its impact.
- vi. Quarterly review of construction activities, sectoral convergence, release and utilization of funds as per mission guideline.
- vii. Ensuring the engagement and consultation of various line department and Panchayati Raj Institutions in preparation of ICAP and DPR.

8.3 Constitution: The Deputy Commissioner/ District Collector/District Magistrate will be the head/chairman of the committee. Deputy Development Commissioner/CEO ZillaParishad/Chief Development officer will be the vice chairman of the committee.

The members of the committee will be the district linedepartments, BDOs, Gram Pradhan/Mukhiya/Sarpanch of the concerned Gram Panchayat where the Rurban Cluster will be located and the reputed NGOs from the area shall be invited as a member of the committee. The suggestive composition of the committee is as follows (Table – 2):

In the committee the first three members would be the permanent members and other members would be invited in accordance with the chosen desirable components for the cluster.

For every cluster there will be a charge officer. The charge Officer can be either from the district having sufficient seniority or any respective Block Development Officer. The respective CO/BDO will be responsible for overall implementation of that particular cluster. Therefore, such official will also be the member of the committee for effective and efficient implementation of the programme.

TABLE 2: PROPOSED COMPOSITION OF DISTRICT LEVEL COMMITTEE

1	Deputy Commissioner/ District Collector/ District Magistrate	Chairperson
2	Deputy Development Commissioner / CEO ZillaParishad/Chief Development Officer	Vice Chairman
3	District Planning Officer	Member
4	District Welfare Officer	Member
5	District Social Welfare Officer	Member
6	District Education Officer	Member
7	District Agriculture Officer & Allied Sectors	Member
8	District Transport Officer	Member
9	Civil Surgeon cum Chief Medical Officer	Member
10	District Informatics Officer	Member
11	District Panchayati Raj Officer	Member
12	Charge Officers of each cluster	Member
13	Sarpanch/ Gram Pradhan of concerned Cluster Villages	Member
14	Reputed NGOs working in area	Member

District Project Management Unit (DPMU) may be set up at the District Collector's office with upto three professionals, (i) Regional Planning Specialist (ii) Convergence Specialist and (iii) Rural Development and Management Specialist. There will be only one DPMU in a District. The existing pool of Prime Minister Rural Development Fellows (PMRDFs) of the State wherever present may also be engaged. The District Project Management Unit will report to the District Collector. This unit shall be responsible for coordinating with implementing departments/agencies for ensuring notification of planning areas and related spatial planning matters, convergence of schemes planned in the ICAP in an integrated and time-bound manner. These DPMUs shall also work in close co-ordination with the SPMU. The desirable team composition, expected qualification and experience and expertise of DPMU Team is available in Annexure – 4.

Why is a DPMU needed? The DPMU is required to provide cluster focused support to the District Collector to ensure smooth implementation of all cluster related activities.

How will the DPMU be set up? DPMU team may be professionals appointed on contract by the SNA on contractual basis for a period of 3 years.

When and where will the DPMU be set up? DPMU will be setup immediately after identification and approval of clusters and would be housed at the DC office. The tenure of DPMU team members shall be for a period of 3 years coinciding with the Mission period.

9.0

Cluster Level Institutional Frameworks

At the Cluster Level it is proposed to have a Cluster Development and Management Unit (CDMU) for each Rurban Cluster. This unit will consist of at least two professionals, i. Spatial planning professional and; ii. Rural management/development professional. This unit will closely monitor the spatial planning aspects and the ICAP preparation

for the cluster and will also closely monitor the progress of the activities in the cluster and provide regular updates to the DPMU/SPMU.

The CDMU Team comprising one Spatial Planning Professional and one Rural Development Professional for each cluster will be recruited and will report to the DC. The desirable team composition, expected qualification and experience and expertise of CDMU Team is available in Annexure – 4.

9.1 Scope of Work of a CDMU

To monitor all cluster related activities and provide technical and operational support to the SPMU/District Collector on all mission related activities for each cluster.

Technical

- i. Oversee all spatial planning activities-viz. delineation of planning area, formation of planning committee, preparation of Master plan for the cluster.
- ii. Support to STSA and DPMU/SPMU in ICAP/DPR preparation and finalization.
- iii. Support to Training and Capacity Building – in close co-ordination with STSA and DPMU/SPMU.

Operational

- i. Support to DPMU/DC for all mission related day-to-day functions at the cluster level.
- ii. Stakeholder consultations with PRIs, CSOs and mentor organizations.
- iii. Facilitating Gram Sabha resolutions for undertaking of National Rurban Mission (NRuM).
- iv. Liaising closely with District Collector, Planning Committee and SPMU.
- v. Ensuring smooth convergence and achievement of all desirable components as per ICAP/DPR.
- vi. Regular reporting of mission progress including via web based monitoring system.

Annexure 1: Suggested Constitution of State, District and Cluster Level Committees

1. State Level Empowered Committee

Chief Secretary President

Principal Secretary/Secretary Rural Development Member Convener

Development Commissioner Vice President

Based on Scheme Components chosen Members

▶ Piped Water Supply

Principal Secretary/Secretary Drinking Water & Sanitation

Principal Secretary/Secretary Water Resource

▶ Agro Processing, Agri Services, Storage and Warehousing

Principal Secretary/Secretary Agriculture

▶ Sanitation

Principal Secretary/Secretary Drinking Water and Sanitation

▶ Solid and liquid waste management

Principal Secretary/Secretary Drinking Water & Sanitation

▶ Village streets and drains

Principal Secretary/Secretary Energy and Renewable Energy

▶ Street lights

Principal Secretary/Secretary Energy and Renewable Energy

Principal Secretary/Secretary Rural Works Department

Principal Secretary Path Nirman

▶ Health care connectivity

Principal Secretary/Secretary Health and Family Welfare

▶ Upgrading school education facilities

Principal Secretary/Secretary Social Welfare and Women and Child Development

Principal Secretary/Secretary Welfare

Principal Secretary/Secretary Education

Principal Secretary/Secretary Panchayati Raj

Principal Secretary/Secretary Human Resource

▶ Skill development training linked to economic activities

Principal Secretary/Secretary Industries

Director Skill Development Mission

CEO State Livelihoods Mission

Principal Secretary/Secretary Animal Husbandry

Principal Secretary/Secretary Fisheries

Principal Secretary/Secretary Panchayati Raj

Director MSME

▶ Inter-village road connectivity

Principal Secretary Path Nirman

▶ Citizen Service Centres- for electronic delivery of citizen centric services/e-gram connectivity

Principal Secretary/Secretary Information and Technology

► **Public transport**

Principal Secretary/Secretary Transport

► **LPG Gas Connections**

Principal Secretary/Secretary Civil Supply and Consumer Affairs

► **Full Digital Literacy**

Principal Secretary/Secretary Education

Principal Secretary/Secretary Information and Technology

Secretary/Commissioner from the Labour Department

Principal Secretary/Secretary Sports & Youth Affairs

Principal Secretary/Secretary Tourism

Principal Secretary/Secretary Panchayati Raj

2. District Level Committee

District Nodal Agency can be notified as- District Rural Development Agency/Zila Parishad

1. Deputy Commissioner/District Collector/
District Magistrate -President
2. Deputy Development Commissioner/
CEO Zilla Parishad/Chief Development
Officer -Vice President
3. Director DRDA -Member
4. Additional Collector - Member

5. District Planning Officer - Member

Based on Scheme Components chosen

6. District Education Officer - Member
7. District Agriculture Officer &
Allied Sectors - Member
8. District Food and
Supply Officer - Member
9. District Transport Officer - Member
10. Civil Surgeon cum Chief
Medical Officer - Member
11. District Informatics Officer - Member
12. Project Director ITDA/MADA - Member
13. District Panchayati Raj Officer - Member
14. Executive Engineer/District
Officer PHED - Member
15. Executive Engineer/District
Officer Minor Irrigation - Member
16. Executive Engineer/District
Officer Electricity Dept./REO - Member
17. Executive Engineer/District
Officer Public Works Dept. - Member
18. Charge Officers of each cluster - Member
19. Sarpanch/Gram Pradhan of
concerned Cluster Villages - Member
20. District Cooperative Officer - Member
21. Lead District Manger(LDM) Bank - Member
22. DDM NABARD - Member

Annexure 2: Desirable expertise and team composition of SPMU

Team Member	Qualification and Experience	Responsibilities
Head SPMU	Professional degree in Rural Management/ Planning/Engineering/Development Management with 15 to 20 years of experience in managing similar large scale GoI/State programs at National/State level.	Reports to the Head of the SNA and He/She to be directly responsible for liaising with SNA/DC/DPMU and Planning committee to ensure smooth implementation of the Mission at the State level.
Urban Planning Specialist	Professional degree in urban planning with 10 to 15 years of experience in spatial planning/preparation of Master Plans, and development plans.	Support to STSAs to prepare ICAPs/ reviewing ICAPs and recommending ICAPs for approval. Support to Head SPMU and SNA to facilitate ICAP approvals from SLEC.
Engineering Specialist	Civil Engineer with 10 to 15 years of experience in working with similar State/ Central programs at the State/National level in preparation and evaluation of DPRs.	Support to STSAs to prepare DPRs and review DPRs. Support to Head SPMU and SNA to facilitate DPR approvals from SLEC.
Convergence Specialist	Master degree in Rural development/ Agriculture/Social sciences with 10 to 15 years of experience of working with large scale schemes in Govt., NGOs or International orgs.	Ensuring convergence of all Central and State level programs chosen for each cluster.
IT/MIS Officer	Degree in management/IT with 5 to 10 years of experience of documentation, report writing, monitoring and evaluation of similar programs.	Developing M&E frameworks for the Mission at the State level and monitoring the progress of development of these Rurban clusters within the State.
Support Executive	Professional degree in Management/ Development with 1 to 3 years of experience.	Executive support to Head SPMU and other Lead Members.

Annexure 3: Desirable expertise and team composition of STSA

Position	Qualification & Skills	Experience
Team Leader	<ul style="list-style-type: none"> Post graduate in rural development/ spatial planning/infrastructure planning/development studies from a premier institution. 	<ul style="list-style-type: none"> Over 20 years of experience in infrastructure development/spatial planning/rural development in rural areas. Significant experience in leading teams on preparation of development plans for the Government either at the State/National level.
Rural Development Expert	<ul style="list-style-type: none"> Graduate or Equivalent and a Post Graduate degree in Rural Development. 	<ul style="list-style-type: none"> At least 15 (fifteen) years of experience in the rural development with proven experience in rural development planning. The person shall have proven experience of having worked on schemes in rural areas of central and state departments.

Position	Qualification & Skills	Experience
Engineering Expert (s)	<ul style="list-style-type: none"> ▶ Civil Engineering Graduate or Equivalent. 	<ul style="list-style-type: none"> ▶ At least 15 (fifteen) years of experience in the preparation of feasibility reports and DPRs. ▶ The person shall have prepared DPR for the Central/State government projects/schemes, preferably in the rural areas focusing on rural development. ▶ Person with experience of feasibility reports and DPRs across any 5 of the desirable components of the mission shall be preferred.
Master Planner/ Spatial	<ul style="list-style-type: none"> ▶ Graduate degree in Engineering/ Architecture/Planning with Post Graduate Degree in Planning and Architecture or equivalent. 	<ul style="list-style-type: none"> ▶ At least 10 Years of Experience in the urban master planning/village development planning. ▶ Proven experience of having done spatial and land use planning for the development of towns/ villages.

Annexure 4: Desirable expertise and team composition of DPMU and CDMU

Desirable expertise and team composition of DPMU

Team Member	Qualification and Experience
Regional Planning Specialist	Post Graduate degree in Rural Management/Regional Planning/Spatial Planning with 3-5 years of experience in preparation of Master Plans/District Development Plans/Land Use Plans.
Rural Development & Management Specialist	Master degree in rural development/rural management, agriculture or social sciences with 3 to 5 years of experience preferably in the rural sector within the State.
Convergence Specialist	Master degree in Rural development/Agriculture/Social sciences/infrastructure planning with 3 to 5 years of experience of working with large scale schemes either with the State Government or with the National Government.

Desirable expertise and team composition of CDMU

Team Member	Qualification and Experience
Spatial Planning Professional	Post Graduate degree in Urban Planning with 3-5 years of experience in preparation of Master Plans/District Development Plans/Spatial Plans.
Rural Management Professional	Master degree in rural development/rural management, agriculture or social sciences with 3 to 5 years of experience preferably in the rural sector within the State.



Ministry of Rural Development
Government of India